

Club Sites Access Statement

Chertsey Access Statement

At the Camping and Caravanning Club, we are committed to creating great experiences for all our guests and ensure everyone is made to feel welcome.

This access statement provides full access information about our site and its facilities for all guests who wish to stay at Chertsey.

If you require any further information or wish to book online, please visit:
www.campingandcaravanningclub.co.uk/chertsey

For telephone bookings please call our UK Service Centre on 02476 475426
Opening hours: 8:00am – 5:30pm, Monday to Friday, Closed 10:00am – 11:00am on
Wednesday
Saturday: 9:00am – 1:00pm from January to August



Site Contact Details

Chertsey Camping and Caravanning Club Site
Bridge Road, Surrey, KT16 8JX

01932 562405



About Chertsey

Chertsey site is located on the far side of the town off Bridge Road, just before Chertsey Bridge that goes over the River Thames. The site itself sits directly alongside the River Thames.

The site is fairly level, however there are slightly sloped areas leading up to hedges and rows of trees around some of the grass pitches. There is one row of Hard Standing pitches on a lower level from the rest of the site near the exit road, the site road slopes down to this row.

Club Sites Access Statement

Chertsey



The site is partially open however, there are numerous shaded areas under and around trees all around the site.

Chertsey offers Hard Standing with Electric & Super service with electric pitches along with Grass with electric pitches including two Jumbo Grass with Electric pitches. All the Grass only pitches on site are Tent ONLY pitches. Chertsey also has 17 storage pitches; however these are for Campervans/Motorhomes ONLY up to a maximum of 6.5 Metres in length.

Mobile signal is generally across site for all Networks.

There is NO payphone on site.

Digital television signal is very good on site due to the close proximity to Crystal Palace. Satellite signal can be affected by trees on site.

Chertsey has full site Wi-Fi across the whole site.



Your Arrival on Site

The nearest train station is 1.5 miles from site. The nearest bus stop is 50 metres from site. There are site signs on Fordwater Road and Chertsey Bridge Road. There are also large signs at the site entrance.

There is 1 keypad on entry.

The office is open 9am-10:30am & 1pm-6pm.

On arrival, please park in arrival bay and await a member of staff.

The approach road is tarmac.

When barriers are locked overnight, car park is located outside site barriers.

The arrival bay is tarmac and level.

There is a designated accessible parking space.

The reception car park will hold 12 cars + 1 accessible space.

The overnight carpark will hold 12 cars + 1 accessible space.

There are no handrails leading to reception.

There are no steps or steep inclines.

There is a slight gradient leading up to the reception building.

Club Sites Access Statement

Chertsey



Your Check In

The reception is clearly signed.

The opening hours are 9am-10:30am & 1pm – 6pm.

Out of hours please ring telephone number located on main reception doors.

There is a slight gradient leading into the reception.

The floor space is free from clutter.



Your Pitch

130 pitches are available where cars can be parked next to a camper's unit.

There are a very limited number of hardstanding pitches close to an accessible facility.

The hardstanding pitches are gravel.

There are 10 level pitches close to the main facility block.



Travelling Around Site

The site roads do not have speed bumps.

The site has low lighting at times of darkness.



The Facility Block

There is a clear, well-maintained path leading to the facilities.

There are no steps leading to the facility block.

There is level access leading to the facility block.

There are no semi-ambulant cubicles.

Club Sites Access Statement

Chertsey



All the taps on site are push button taps.

All showers have seats.

The showers are push-button operated.

The showers Do Not have a step leading to them.

The facility block is lit at night.



The Accessible Facilities

There is a flat level path leading to the accessible facility.

There are no handrails leading to the accessible facility.

There is flat level access into the accessible facility.

The toilet has handrails.

The toilet has a large flush handle.

Transfer space either side of the toilet.

The washbasin cannot be reached from the toilet.

Taps are lever operated.

There is a hand dryer.

There is a full-length mirror.

The shower has handrails.

The shower is dial operated.

The shower is open access.

The shower head is height adjustable.

The floor is non-slip.

There is no hairdryer.

There are 2 emergency cords that can be reached from the floor.

Club Sites Access Statement

Chertsey



Only one can be heard from the staff pitches and the reception.



Laundry & Food Preparation Areas

These areas have good level access.

The surface leading up to the laundry is Tarmac.

Taps are all push button taps.

The washing machines are front loading.

At least one can be loaded from the floor.

The tumble dryers are front loading and at least one can be loaded from the floor.

There is a wall mounted iron.

There is a freestanding ironing board.

There are outdoor enclosed washing up facilities.

Taps are All push button.

There is NO outdoor drying area.



Recreational Areas

There is an indoor recreational area with level access.

Plastic chairs are available in this area.

There is an outdoor children's play area with level access.

No seating is available near the play area.

The surface of the area is safety flooring.

There are no raised edges surrounding it.

Club Sites Access Statement

Chertsey



Waste, Water, Fire and Evacuation

There is flat level access leading to the refuse area.

The path is Tarmac.

There are no steps or kerbs.

The waste containers are 1.3m high.

There are fire triangles on site.

There is unrestricted access to firefighting equipment.

Assembly points are in the site car park and entrance to island.

Assembly point surface is tarmac.

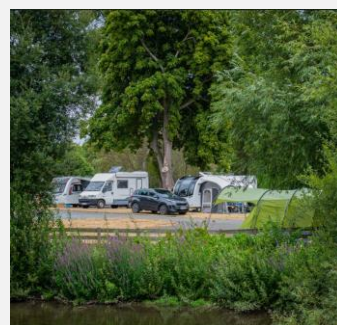
Although we have tried to be as accurate as possible and include as much detail as we can in this statement, we are always happy to give additional information on any of our Club Sites if this statement does not answer your questions. We encourage and welcome feedback so if you have any comments please don't hesitate to get in touch.



"Welcoming friendly staff, very well-kept grounds right next to the Thames. The toilet, showers and Elsan are immaculately clean and modern. Definitely going to return."



"Lovely pitch next to the river, watched the boats and world go by. Great staff, friendly and helpful, nothing too much trouble. Lovely pubs nearby 2 minutes' walk. The facilities at this site 10/10 and spotless."



"We had a lovely stay here on a hardstanding electric pitch. Facilities are amazing and so well cleaned and kept. Pitches are a good size and well-spaced out. Friendly staff. Good campsite for little ones."