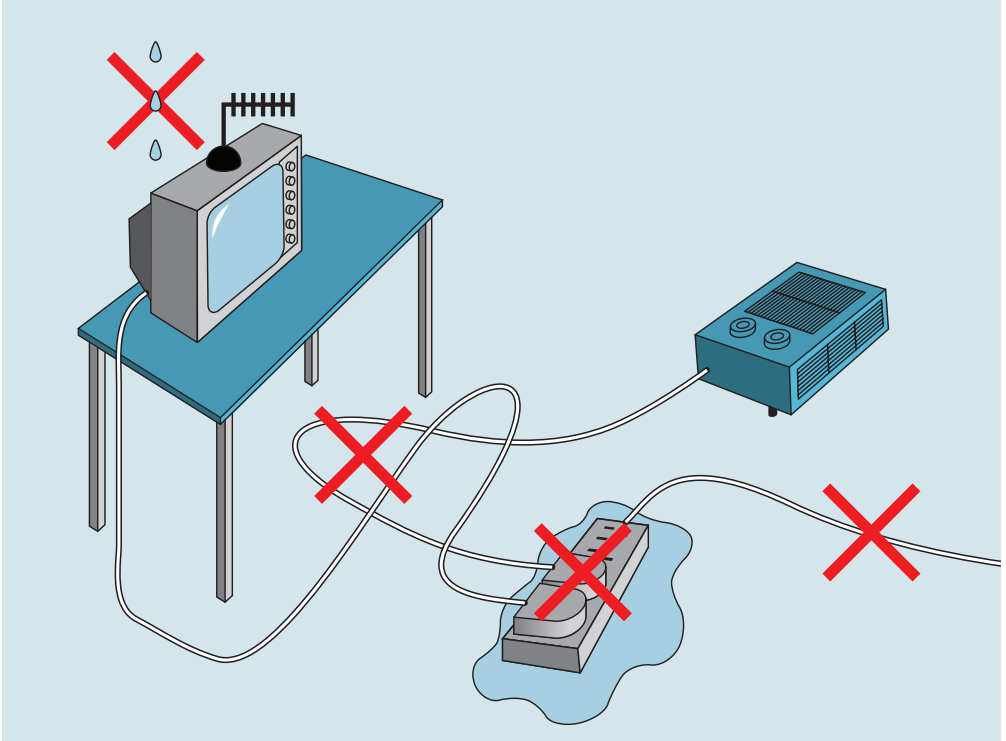


Using Electricity in Your Tent

Be Aware of the Hazards



- Water and electricity do not mix
- Proprietary hook up equipment is designed to resist damp conditions, but is only fully effective when appliance plugs are not inserted and covers are over the sockets
- Only use the blue plug to connect to the site electricity bollard
- Most domestic electrical appliances are not designed for the damp outdoors
- Supply leads in a confined space can present a trip hazard





Minimise the Risks

Do's

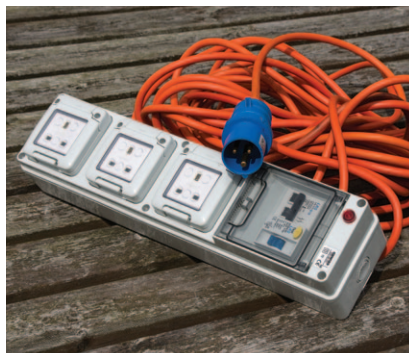
- ✓ Use only proprietary hook-up equipment purchased from a reputable dealer with safety devices including an RCD and an IP rating of 44 or greater
- ✓ Keep hook-up equipment off the ground and close to the appliances
- ✓ Use only when someone is present otherwise switch off and remove plugs, ensuring covers are over sockets
- ✓ Test the operation of the Circuit Breaker before plugging the appliances in
- ✓ Be prepared to stop using electricity when conditions in the tent are damp

Don'ts

- ✗ **NEVER** use a household extension cable, even with an RCD plug, instead of proprietary hook-up equipment
- ✗ Do **NOT** use household plug adaptors: and only one appliance per socket
- ✗ Do **NOT** allow children to be involved in the installation and operation of electricity

If in doubt about the safety or suitability of your equipment get advice from a qualified electrician.

For further information see www.myccc.co.uk/helpandadvice/technicalhelp/power/electricity-for-campers-and-caravanners/ alternatively contact the Club's Technical Department via email at techtalk@thefriendlyclub.co.uk or call on 024 7647 5282.



Keep hook up equipment off the ground



Use only proprietary hook up equipment with safety devices including a RCD and an IP rating of 44 or greater